

# Life is calling... *Take control*



**BRUKINSA is a type of targeted oral therapy called a Bruton's tyrosine kinase (BTK) inhibitor.** BRUKINSA is a prescription medicine used to treat adults with:

- Chronic lymphocytic leukemia (CLL) or small lymphocytic lymphoma (SLL).
- Waldenström's macroglobulinemia (WM).
- Mantle cell lymphoma (MCL) who have received at least one prior treatment for their cancer.
- Marginal zone lymphoma (MZL) when the disease has come back or did not respond to treatment and who have received at least one certain type of treatment.
- Follicular lymphoma (FL), in combination with the medicine obinutuzumab, when the disease has come back or did not respond to treatment and who have received at least two prior treatments.

BRUKINSA was approved for MCL, MZL, and FL based on response rate. There are ongoing evaluations to confirm clinical benefit for these uses.

It is not known if BRUKINSA is safe and effective in children.

## **IMPORTANT SAFETY INFORMATION**

**BRUKINSA may cause serious side effects, including:**

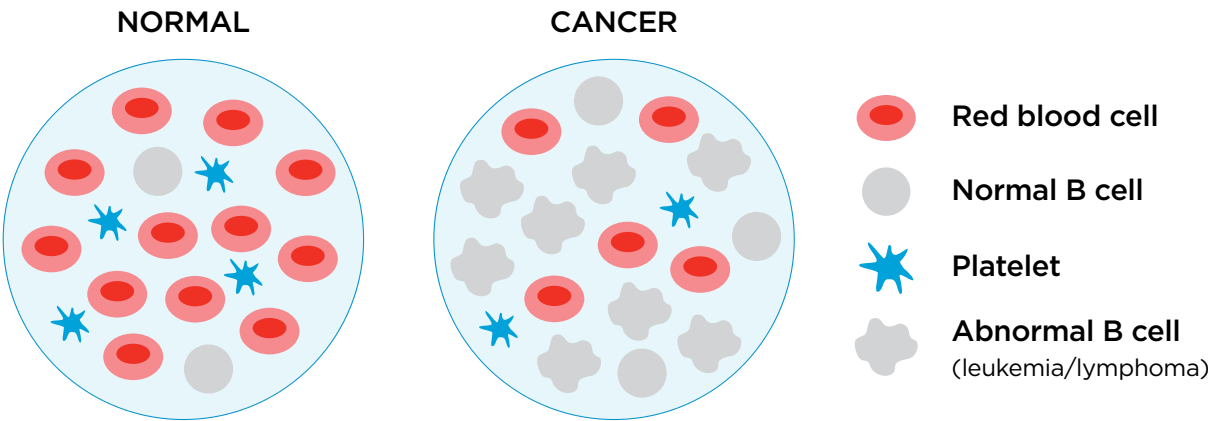
**Bleeding problems** (hemorrhage). Bleeding problems are common with BRUKINSA, and can be serious and may lead to death. Your risk of bleeding may increase if you are also taking a blood thinner medicine.

**Please see additional Important Safety Information throughout and accompanying full Patient Information.**

# What are B-cell lymphomas?

## The role of B cells

- B cells (also known as B lymphocytes) are a type of white blood cell found in your blood and bone marrow
- When B cells develop normally, they help protect the body from infection and disease
- B-cell lymphomas, such as CLL/SLL, WM, MCL, MZL, and FL, are caused by the growth and spread of abnormal, or cancerous, B cells



## The role of BTK

- BTK is a protein that sends non-stop signals to cancerous B cells to grow and spread
- Blocking BTK can help stop this signaling

*Shutting down, or inhibiting, BTK may help stop the signaling in cancerous B cells.*

# What is BRUKINSA?

**BRUKINSA is a BTK inhibitor designed to treat CLL/SLL, WM, MCL, MZL, and FL**

- A BTK inhibitor is a targeted treatment that works to shut down (or inhibit) BTK
- BRUKINSA has been shown to block 100% of BTK in blood cells and 94% to 100% of BTK in lymph nodes when taken at the recommended total daily dose of 320 mg. The significance of blocking up to 100% of BTK on treatment responses has not been established

*BRUKINSA was designed to shut down BTK signaling and keep it shut down around the clock.*

## IMPORTANT SAFETY INFORMATION

**BRUKINSA may cause serious side effects, including:**

**Bleeding problems** (hemorrhage) (continued). Tell your healthcare provider if you have any signs or symptoms of bleeding, including: blood in your stools or black stools (looks like tar), pink or brown urine, unexpected bleeding, or bleeding that is severe or you cannot control, vomit blood or vomit that looks like coffee grounds, cough up blood or blood clots, increased bruising, dizziness, weakness, confusion, change in speech, or headache that lasts a long time.

**Infections** that can be serious and may lead to death. Tell your healthcare provider right away if you have fever, chills, or flu-like symptoms.

**Decrease in blood cell counts** (white blood cells, platelets, and red blood cells). Your healthcare provider should do blood tests during treatment with BRUKINSA to check your blood counts.

Please see additional Important Safety Information throughout and accompanying full [Patient Information](#).







## Who can take BRUKINSA?

BRUKINSA is the only BTK inhibitor approved in 5 different  
B-cell lymphomas



**OVER 200,000 PATIENTS  
TREATED WITH BRUKINSA**

for CLL/SLL, WM, MCL, MZL, or FL around the world\*



*For information about how BRUKINSA was shown to  
be effective against your disease, talk to your doctor  
or visit [BRUKINSA.com](https://www.brukinsa.com).*

\*Based on data owned by BeOne Medicines USA, Inc.

### IMPORTANT SAFETY INFORMATION

**BRUKINSA may cause serious side effects, including:**

**Second primary cancers.** New cancers have happened in people during treatment with BRUKINSA, including cancers of the skin or other organs. Your healthcare provider will check you for other cancers during treatment with BRUKINSA. Use sun protection when you are outside in sunlight.

## What are the most common side effects of BRUKINSA?

### People taking BRUKINSA may experience side effects

The most common ones include:

- Decreased white blood cell count
- Upper respiratory tract infection
- Decreased platelet count
- Muscle, bone, or joint pain
- Bleeding

These are not all the possible side effects of BRUKINSA. Call your doctor for medical advice about side effects, particularly if you have any new or worsening ones. You may report side effects to the FDA at 1-800-FDA-1088.

*Your doctor can help manage side effects to help  
you feel better and stay on treatment.*

### IMPORTANT SAFETY INFORMATION

**BRUKINSA may cause serious side effects, including:**

**Heart rhythm problems** (atrial fibrillation, atrial flutter, and ventricular arrhythmias) that can be serious and may lead to death. Tell your healthcare provider if you have any of the following signs or symptoms: your heartbeat is fast or irregular, feel lightheaded or dizzy, pass out (faint), shortness of breath, or chest discomfort.




Please see additional Important Safety Information  
throughout and accompanying full [Patient Information](#).



# How is BRUKINSA taken?

Your doctor can prescribe BRUKINSA either once or twice daily—making it the only BTK inhibitor that offers the choice of 2 dosing schedules

- BRUKINSA is an oral prescription medicine with a recommended dose of 320 mg daily taken as two 160 mg tablets
- BRUKINSA tablets are small and easy to swallow. The tablets are scored so they can be easily split if your doctor prescribes you a lower dose

ONCE A DAY		TWICE A DAY
for convenience		to match the schedule of other medicines you may take
	OR	 AM  PM
2 tablets taken once daily		1 tablet in the morning, 1 tablet in the evening

*Talk with your doctor about which dosing schedule may be right for you.*

## IMPORTANT SAFETY INFORMATION

BRUKINSA may cause serious side effects, including:

**Liver problems.** Liver problems, which may be severe or life-threatening, or lead to death, can happen in people treated with BRUKINSA. Your healthcare provider will do blood tests to check your liver before and during treatment with BRUKINSA. Tell your healthcare provider or get medical help right away if you have any signs of liver problems, including stomach pain or discomfort, dark-colored urine, or yellow skin and eyes.

# Is there other important dosing information?

## Take BRUKINSA exactly as prescribed

- Do not switch your dosing schedule without discussing with your doctor first
- BRUKINSA tablets can be taken with or without food. They should be taken with water
- BRUKINSA tablets should not be chewed or crushed

## If you miss a dose of BRUKINSA, take it as soon as you remember

- Try to take it on the same day. Return to your normal schedule the next day

## Tell your doctor about all the medications you are currently taking, as well as certain supplements and foods

This includes prescription and over-the-counter medicines, vitamins, herbal supplements, and certain citrus fruits, such as:

- |             |                   |                    |
|-------------|-------------------|--------------------|
| • Echinacea | • Goldenseal      | • Grapefruit juice |
| • Ginseng   | • St. John's wort | • Seville oranges  |

## You will take BRUKINSA for as long as your doctor thinks it is helping you, or for as long as side effects are manageable

- Your dose and schedule may be changed or interrupted by your doctor to meet your individual treatment needs, including managing side effects

Please see additional Important Safety Information throughout and accompanying full [Patient Information](#).







## Patient Assistance Program

**We want you to focus on your treatment and day-to-day living.**

To help meet your needs, myBeOne Support pairs eligible patients with a dedicated Oncology Nurse Advocate who can help personalize support throughout your treatment with BRUKINSA.

Program services include:



**Simplifying access to BRUKINSA**



**Educating you and your caregivers about your treatment and disease**



**Connecting you and your caregivers to independent organizations that may be able to assist with day-to-day living support**

Independent third-party organizations have their own rules for eligibility. BeOne Medicines has no involvement in their decision-making or eligibility criteria. This information is non-exhaustive and not meant as an endorsement from BeOne Medicines.



***For any questions, or to help you get started,  
call **1-833-234-4363**, M-F 8 AM-8 PM ET,  
or visit [myBeOneSupport.com](https://myBeOneSupport.com).***

BRUKINSA, BeOne Medicines, and myBeOneSupport are trademarks owned by BeOne Medicines I GmbH or its affiliates.

myBeOneSupport™ is not insurance and does not guarantee product coverage or reimbursement.

© BeOne Medicines I GmbH, 2025 All Rights Reserved.  
0824-BRU-PRC-099 10/2025

